

NEWSLETTER

Department of Speech Pathology and Audiology • The University of Iowa • Summer 1988

NOTE FROM THE CHAIR

Every year there are a number of changes in our faculty and staff. We lose some excellent people to retirement or new opportunities. We hire new faculty and staff. Faculty members develop new interests, new research thrusts, and even new courses. This year has been no exception—our faculty and staff continue to develop.

In July 1988, we were joined by Assistant Professor Patricia Zebrowski. She completed her Ph.D. at Syracuse University in 1987. Professor Zebrowski specializes in the area of stuttering. Dean Williams, who officially retired on February 1, 1987, taught the undergraduate stuttering course in fall semester 1987. We thank Professor Williams for teaching it one more time.

In the last newsletter, it was announced that Julia Davis had taken a position as dean of the College of Social and Behavioral Sciences at the University of South Florida in Tampa. We have recently hired Ruth Bentler, who specializes in hearing aids, to fill out our audiology faculty. She completed her Ph.D. in the fall of 1987 at The University of Iowa and has been a professional staff member with us for ten years.

Late last spring, Kenneth Moll announced that he plans to leave his position as associate vice president of academic affairs. He will begin a one-year developmental assignment in June 1989 and then join the faculty of this department. We are all looking forward to his return.

In fall 1987, Bruce Tomblin was on a developmental assignment working on a new research program involving genetic assessment of language disorders. Chaslav Pavlovic is spending a year at the Institut De Phonetique in Aix-en-Provence, France, involved in collaborative research in speech perception. Charles Anderson was on a developmental assignment in spring 1988 to write an audiology textbook. Erich Luschei

Continued on page 2



SUMMER RESIDENTIAL PROGRAM

In 1946 Wendell Johnson started the Summer Residential Program (SRP) to provide stuttering therapy for out-of-town children during the summer. The first children were housed in foster homes while receiving speech services in the department's training clinic. Over the years, SRP has moved from foster homes to a rented fraternity house to the current use of a University residence hall. In the 1960s, the College of Education's reading program joined SRP, and since then the program has served children whose communication disorders include problems of speech, language, hearing, and reading.

Now in its forty-second year, SRP typically serves about 30 children, who live on campus for six weeks each summer. Although children between 7 and 16 years old are included in the program, the majority of the participants are between the ages of 8

and 12. Most of the children are from Iowa, but each year SRP also serves children from other states. In recent years, participants have included children from Arizona and Alaska, as well as from Canada. Most children are scheduled for four to five hours of therapy per day in the clinic. In addition, the residence hall staff provide specialized programs for social skills and self-image development.

During the past few years, several new programs have been added to SRP. For example, faculty and staff have developed a communication strategies program in the aural rehabilitation practicum, and hearing-impaired children have received specialized music training from School of Music faculty and students. The residence hall staff have developed sexual abuse awareness programs for the children.

Continued on page 6



Note from the Chair *continued from page 1*

plans a developmental assignment in fall 1988 to refine laboratory techniques for intracellular recording.

In December 1987, we were joined by Jerald B. Moon, research scientist and adjunct assistant professor. He has B.A. and M.S. degrees from the University of Western Ontario and a Ph.D. from Purdue University. Professor Moon spent two years as a research scientist on the Cleft Palate Program Project in the Department of Otolaryngology—Head and Neck Surgery and then left for one year to work at Thames Valley Children's Center in London, Ontario, before returning to The University of Iowa. He is working with Jerry Zimmermann, Carolyn Brown, and me on the research project, "Studies of Speech Articulation." In the spring of 1988, Professor Moon taught our undergraduate speech science course.

Our plans for future faculty development include a search, to be announced and conducted in the coming year, for a new faculty member specializing in voice disorders. Although our highest priority is to find a good teacher and clinician with potential as a clinical researcher, we are hoping to find someone who also has an interest in voice disorders of professional singers and speakers.

The department continues to enroll excellent students in our

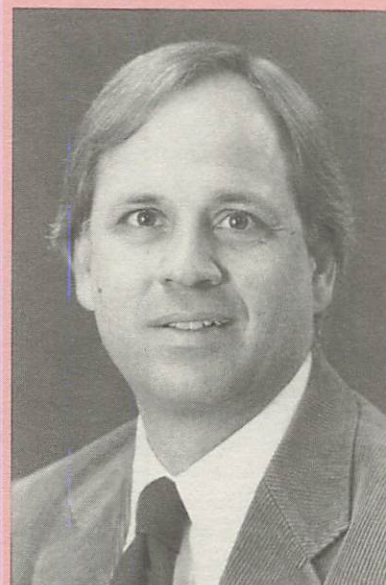
bachelor's, master's, and doctoral degree programs. This year we have had four graduate students or postdoctoral students on professional improvement status (meaning they are not working for a degree). Our foreign graduate students this year have come from Canada, Egypt, West Germany, Japan, New Zealand, the People's Republic of China, and Taiwan. We presently have three training grants from the U.S. Department of Education that allow us to offer stipends to recruit some of the very best students in this country.

Although the state of Iowa was hit hard by the rural/farm crisis during the 1980s, the University has received increments for faculty salaries that are above the rate of inflation for the last two years. Unfortunately, there are still a number of areas in which state support has fallen behind. Salary increments for professional and scientific staff have been smaller than comparable faculty salary increments, and our expense budgets supported by the University have not increased in recent years.

The University is now experiencing a hiring freeze; however, we are all hopeful that University support will improve. In some cases faculty members have been able to compete for grant support to allow us to develop innovative programs; however, in

many areas, such as support for student research projects or remodeling of the room used for our preschool for children with communication disorders, there is no University or grant money for which to compete. We are thankful for the donations we have received to help pay for some activities in the past, and we hope to be able to support more such activities in the future.

John W. Folkins



SPECIAL FUNDS

The James F. Curtis Fund supports research and travel by graduate students in the department. The Dorothy Sherman Student Aid Fund is used to cover some of the expenses incurred by students doing honors theses. We also have special projects, such as our Center for Assistive Devices for the Hearing Impaired, the Summer Residential Program, and the Communication Disorders Preschool. Anyone is free to contribute to these special funds or to make a contribution to the general department fund. Contributions to the general fund can be open or designated for a specific program.

COMMUNICATION DISORDERS CLASSROOM

The second floor of the Wendell Johnson Speech and Hearing Center was alive with the sounds of preschoolers four mornings per week for the 1987-88 school year. Funded through the Grant Wood Area Education Agency as a classroom for preschool-age children with severe communication disorders, speech-language clinicians Ann Baumann and Sandy Show worked with a classroom population of up to ten children enrolled at one time. Several graduate students participated in supervised clinical practicums with some of the preschoolers, gaining valuable experiences with management of phonological disorders and developmental language disorders.

This year, in addition to the classroom project, a grant from the Iowa Department of Public Instruction was given to the Grant Wood Area Education Agency to fund a research component. Data are being collected in an attempt to demonstrate that the communication disorders classroom provides a more appropriate service delivery model to the severely communication-impaired preschooler than the three other service types currently available in the AEA. This longitudinal study will follow the current classroom participants through the third grade. Professor Amy Weiss is serving as research coordinator; two part-time research assistants are responsible for data gathering from the 84 young subjects.

HONORS STUDENTS

In May 1988, 12 students received B.S. degrees with honors from the Department of Speech Pathology and Audiology. To receive honors, a student must qualify for the College of Liberal Arts Honors Program, enroll in the department's fall semester honors seminar, and do an honors thesis during the spring semester of the senior year. The following is a list of the students, their honors thesis title, and their adviser's name:

Brenda Bergman, "Effects of Cochlear Implant Use on Vowel Production and Perception" (Charissa Lansing and John Folkins)

Cathy Condon, "Deafness and Abstract Thought" (Bob Schum)

Kim Hiddleston, "Parent-Child Interaction with Hearing Impaired and Normal Children" (Bob Schum)

Linda Hug, "Neurological Correlates to Auditory Patterns in Humans" (Don Robin and Paul Abbas)

Andrea Jurens, "Perception and Production of Sentence Focus in Speech and Language Disorders" (Penny Hall and Don Robin)

Sandy Kock, "A Retrospective Study of Speech and Language Abilities of Children with Phenylketonuria" (Chuck Felling)

Kristin Lodge, "Beginning Signers' Self-Assessment of Sign Language Skills" (Jill Elfenbein)

Kim Niday, "Auditory Training with Visual Barriers—Does It Affect Auditory Cues?" (Jill Elfenbein)

Becky Pichik, "Picture Abstraction Level Identified by Nonhandicapped Children" (Jim Hardy, Joyce Munson-Davis, and Carol Nordquist)

Joni Saupe, "Test/Retest Reliability of the Context Sentence Test" (Nancy Tye-Murray and Rich Tyler)

Diane Weingart, "The Clinical Relevance of Spontaneous Language Samples Elicited in the Home and in the Clinic" (Amy Weiss)

Molly Woodruff, "A Study of the Presence of Variability in Developmental Apraxia of Speech" (Penny Hall)

REMODELING OF AUDIOLOGIC TESTING AREA

Room 101, the audiologic testing area, was remodeled during the spring semester. The area was made fully accessible to wheelchairs. The floor outside the test booths was raised several inches to make it level with the floor inside the booths. One of the four test booths was moved out of the area to make more space to counsel clients,

demonstrate assistive devices, and meet with groups.

The test booth that was moved was put in a laboratory being developed by Professor Jill Elfenbein. Her laboratory will be used for psychoacoustic studies involving children as well as many projects on the habilitation of deaf and hard-of-hearing children.

DEPARTMENTAL NSSLHA CHAPTER

The 1987-88 school year has been one of increased participation and enthusiasm for The University of Iowa chapter of the National Student Speech Language Hearing Association. Throughout the year, workshops pertaining to résumé writing, interviewing for jobs, and state licensing were held at the WJSHC. A committee of undergraduate members constructed an informational handbook for undergraduate students. Special events included faculty/student lunches in the student lounge; a Christmas party with Santa Claus; purchase of a microwave oven for the student lounge, funded by sweatshirt sales; and the "End of the Year Bash" held at a local pizza parlor. The following are among the awards presented at the "Bash":

NSSLHA Student of the Year—Mary

Copper (chosen by faculty from nominations submitted by students)

Faculty/Staff Member of the Year—Bob Schum (chosen by students)

Participation at these events by faculty, staff, and students was greatly appreciated.

Officers for the 1987-88 school year
President: Ann Kearney and Karalee Emrich
Secretary: Mia Mueller
Treasurer: Jennie Kloberdanz
Education: Julie Zahner
Faculty/Student Relations: Mary Copper
At Large: Linda Hug
Workshop: Jodi Nelson

Officers for the 1988-89 school year
President: Karalee Emrich and
Brenda Bergman
Secretary: Deanna Distelhorst
Treasurer: Mia Mueller
Education: Deanne Riess
Workshop: Linda Hug
Undergraduate Chair: Cathy Bunker

AWARDS, HONORS, AND ELECTIONS

In the fall of 1987, the department's third annual Distinguished Alumni Award was given to Charles Van Riper. At the age of 82, Van Riper does not travel very much and so was unable to be with us to honor him. He wrote a letter that was read by Dean Williams at a seminar meeting in his honor. Professor Williams talked about personal memories from his 50 years of friendship with Van Riper.

James C. Hardy was selected by the Iowa Speech-Language-Hearing Association as a 1987 nominee for the Louis DeCarlo Award from the American Speech-Language-Hearing Association. This award is based on a lifetime of outstanding clinical achievement. Hardy was recognized for work with developmental disabilities, management of palatal dysfunction with palatal lift prostheses, and development of the Rehabilitation Engineering Department in the Division of Developmental Disabilities.

Linda Jordan has been elected president of the Iowa Speech-Language-Hearing Association for 1988-90. Betty Merrifield serves as ISHA's executive secretary.

J. Bruce Tomblin was selected as a fellow of ASHA. The announcement was made at the November 1987 ASHA convention in New Orleans. Fellows are recognized for making important contributions to the profession in at least three of the following areas: clinical service, academic teaching, research and publications, administration, service to ASHA, and service to state or local speech-language-hearing associations.

- TYLER, R. S.** (July 1987). "Psychophysics of cochlear implants." Gordon Research Conference, New London, New Hampshire.
- MORRIS, H. L.** (August 1987). "Craniofacial anomalies." Fourth Internationales Hamburg Symposium, Kraniofaziale Anomalien und Lippen-Kiefer-Gaumenspaltern, Hamburg, West Germany.
- MORRIS, H. L.** (August 1987). "Cleft of lip, alveolus, and palate." Fourth Internationales Hamburg Symposium, Kraniofaziale Anomalien und Lippen-Kiefer-Gaumenspaltern, Hamburg, West Germany.
- ROBIN, D. A.** (August 1987). "Prosodic deficits in patients with lesions of the central nervous system." Seminar, Rehabilitation Center, Emanuel Hospital, Portland, Oregon.
- SCHUM, R. L.** (August 1987). "Psychological development of hearing-impaired children: The early years." Parent-Infant Institute, Iowa Department of Education, Council Bluffs.
- SCHUM, R. L.** (August 1987). "Growing up hearing-impaired: The hows and whys of social development." Arkansas Children's Hospital, Little Rock, Arkansas.
- VAN DEMARK, D. R.; Hotz, M.; Gnoinski, W.; and Nussbaumer, H.** (August 1987). "The Zurich study: Speech evaluation." Fourth Internationales Hamburg Symposium, Kraniofaziale Anomalien und Lippen-Kiefer-Gaumenspaltern, Hamburg, West Germany.
- ANDERSON, C. V.** (September 1987). "Types of hearing loss." Lecture, Hawkeye Chapter, Self Help for Hard of Hearing People, Inc., Iowa City.
- ANDERSON, C. V. and ROBIN, D. A.** (September 1987). "Communication with elderly who have speech, language, and hearing problems." Workshop, Health Care Continuing Education, Northern Iowa Technical Institute, Calmar.
- MOON, J.** (September 1987). "Application of instrumentation to the diagnosis and treatment of velopharyngeal and laryngeal disorders." Ontario Association of Speech-Language Pathologists and Audiologists, Toronto, Canada.
- MOON, J.** (September 1987). "Surgical and surgical-prosthetic approaches to voice restoration after total laryngectomy." Ontario Association of Speech-Language Pathologists and Audiologists, Toronto, Canada.
- TYLER, R. S.** (September 1987). "Evaluation of cochlear implant patients." British Society of Audiology, Birmingham, United Kingdom.
- FOLKINS, J. W.** (October 1987). "Some general perspectives from speech motor control." International Conference on Multidisciplinary Management of the Unilateral Cleft Lip and Palate, The University of Iowa, Iowa City.
- HALL, P.** (October 1987). "Developing guidelines for test selection in speech and language." Iowa Speech-Language and Hearing Association, Des Moines.
- PERLMAN, A. L.** (October 1987). "Indirect and direct treatment for dysphagia." Workshop, Evaluation and Treatment of Dysphagia, sponsored by American Speech-Language-Hearing Association, Chicago, Illinois.
- ROBIN, D. A.** (October 1987). "Subcortical lesions and aphasia." Iowa Speech-Language and Hearing Association, Des Moines.
- ROBIN, D. A.; Tranel, D.; and Damasio, H.** (October 1987). "Deficits in temporal and spectral perception following focal cerebral damage." Academy of Aphasia, Phoenix, Arizona.
- SCHUM, R. L.** (October 1987). "Counseling parents of communication-impaired children." Area Education Agency 7, Cedar Falls.
- TOMBLIN, J. B.** (October 1987). "Predicting language disorders in young children." Iowa Speech-Language and Hearing Association, Des Moines.
- TOMBLIN, J. B.; Beisler, J.; HALL, P. K.; ELFENBEIN, J. A.; and Tye-Murray, N.** (October 1987). "Guidelines for assessment instruments in language." Iowa Speech-Language and Hearing Association, Des Moines.
- VAN DEMARK, D. R.; Perko, M.; and Gnoinski, W.** (October 1987). "Two-stage cleft palate repair in unilateral cleft lip and palate." International Conference on Multidisciplinary Management of the Unilateral Cleft Lip and Palate, The University of Iowa, Iowa City.
- WEISS, A.** (October 1987). "Informal assessment." Iowa Speech-Language and Hearing Association, Des Moines.
- ANDERSON, C. V.** (November 1987). "Types of hearing loss." Lecture, Quad Cities Chapter, Self Help for Hard of Hearing People, Inc., Moline, Illinois.
- ANDERSON, C. V.** (November 1987). "Assistive listening devices for the hearing impaired." Lecture, Hawkeye Chapter, Self Help for Hard of Hearing People, Inc., Iowa City.
- BEAN, C.; FOLKINS, J. W.; and Cooper, W. E.** (November 1987). "Effects of stress on passage comprehension." American Speech-Language-Hearing Association, New Orleans, Louisiana.
- BENTLER, R. A. and CHIN, M.** (November 1987). "External ear resonance characteristics in children." American Speech-Language-Hearing Association, New Orleans, Louisiana.
- ELFENBEIN, J.; Lansing, C.; Davis, J.; and KALLAUS-GAY, A.** (November 1987). "Communication strategies of adults with acquired hearing losses." American Speech-Language-Hearing Association, New Orleans, Louisiana.
- Abbs, J. H. (chair); Netsell, R. W.; FOLKINS, J. W.; Baer, T.; and Conture, E. G.** (November 1987). "Instrumental analyses of speech production. II. Application to disorders." Double miniseminar, American Speech-Language-Hearing Association, New Orleans, Louisiana.
- Jackson, M. F. and HALL, P. K.** (November 1987). "A longitudinal study of articulation characteristics in developmental verbal apraxia." American Speech-Language-Hearing Association, New Orleans, Louisiana.
- Rizzo, M. and HURTIG, R. R.** (November 1987). "Can Markov analysis provide an index of human information processing during visual scanning?" Society for Neuroscience, New Orleans, Louisiana.
- KAHN, G.** (November 1987). "Potentially ototoxic drugs in neonates: Subsequent effect on hearing." American Speech-Language-Hearing Association, New Orleans, Louisiana.
- Leeper, H. A.; Colcleugh, R.; and MOON, J.** (November 1987). "Oral port constriction and articulation of maxillary-mandibular osteotomy patients." American Speech-Language-Hearing Association, New Orleans, Louisiana.
- PERLMAN, A. L. and ALIPOUR-HAGHIGHI, F.** (November 1987). "Twitch contractions of laryngeal muscles." American Speech-Language-Hearing Association, New Orleans, Louisiana.
- ROBIN, D. A.; HALL, P. K.; and JORDAN, L. S.** (November 1987). "Prosodic impairment in developmental verbal apraxia." American Speech-Language-Hearing Association, New Orleans, Louisiana.

- ROBIN, D. A.; BEAN, C.;**
FOLKINS, J. W.; and Rizzo, M. (November 1987). "Velocity of lip movement in apraxia of speech." American Speech-Language-Hearing Association, New Orleans, Louisiana.
- TITZE, I. R.** (November 1987). "Physiology of the female larynx." Acoustical Society of America, Miami, Florida.
- Linville, R. N. (chair); Kuehn, D. P.; Karnell, M. P.; TITZE, I. R.; Warren, D. W.; SCHERER, R. C.; FOLKINS, J. W.; Netsell, R.; JONES, D. L.; and MORRIS, H. L.** (November 1987). "Contemporary issues in velopharyngeal research." Double miniseminar, American Speech-Language-Hearing Association, New Orleans, Louisiana.
- TOMBLIN, J. B.** (November 1987). "Theoretical issues in language screening." American Academy of Pediatrics, New Orleans, Louisiana.
- TYLER, R. S.** (November 1987). "Noise suppression hearing aids." American Speech-Language-Hearing Association, New Orleans, Louisiana.
- Hardin, M. A. and VAN DEMARK, D. R.** (November 1987). "Assessment of velopharyngeal competence: A long term process." American Speech-Language-Hearing Association, New Orleans, Louisiana.
- WEISS, A.; Johnson, C.; and Carney, A.** (November 1987). "Syntactic skill and narrative abilities of hearing-impaired adolescents." American Speech-Language-Hearing Association, New Orleans, Louisiana.
- WEISS, A.** (November 1987). "Language assessment for intervention decisions." Workshop for speech-language pathology personnel, Grant Wood Area Education Agency, Cedar Rapids.
- ANDERSON, C. V.; BENTLER, R. A.; and ELFENBEIN, J. L.** (December 1987). "Issues related to hearing disorders." Workshop, Iowa Division of Vocational Rehabilitation, Iowa City.
- MORRIS, H. L.** (December 1987). "Cleft palate and speech production: Some clinical hypotheses revisited." University of Pittsburgh, Pittsburgh, Pennsylvania.
- MORRIS, H. L.** (December 1987). "Issues in graduate education for speech-language pathology and audiology." University of Pittsburgh, Pittsburgh, Pennsylvania.
- SCHUM, R. L.** (December 1987). "Psychological testing with the communication-impaired." Southeast Minnesota Educational Cooperative Service Unit, Rochester, Minnesota.
- SCHUM, R. L.** (December 1987). "Assessment of children 0-5 years." Presenter and coordinator, workshop for school psychologists and speech-language pathologists (sponsored by Department of Education), Area Education Agency 14, Creston.
- ANDERSON, C. V.** (January 1988). "The effects of hearing loss on older adults." Workshop, Senior Citizens Peer Counseling Program, Iowa City.
- ELFENBEIN, J.** (January 1988). "Cochlear implants." Twin Tiers Rehabilitation Center of St. Joseph's Hospital, Elmira, New York.
- ABBAS, P. J. and BROWN, C. J.** (February 1988). "Electrically evoked brainstem potentials in cochlear implant patients with multi-electrode stimulation." Association for Research in Otolaryngology, Clearwater Beach, Florida.
- PHILIPPBAR, S. A.; ROBIN, D. A.; and LUSCHEI, E. S.** (February 1988). "Limb, jaw, and vocal tremor in patients with Parkinson's disease." Clinical Dysarthria Conference, San Diego, California.
- PERLMAN, A. L.** (February 1988). "Diagnosis of swallowing disorders." Ball State University, Muncie, Indiana.
- PERLMAN, A. L.** (March 1988). "Treatment of swallowing disorders." Ball State University, Muncie, Indiana.
- TITZE, I. R.** (February 1988). "Update on high quality speech synthesis." Invited lecture, U.S. West Advanced Technologies, Denver, Colorado.
- ALIPOUR-HAGHIGHI, F. and TITZE, I. R.** (March 1988). "A finite element simulation of vocal fold vibration." Fourteenth Northeast Bioengineering Conference, University of New Hampshire, Durham, New Hampshire.
- ELFENBEIN, J. and COPPER, M.** (March 1988). "Assistive listening devices." Parent meeting sponsored by the State Department of Education, Amana.
- ELFENBEIN, J. and Gfeller, K.** (March 1988). "Use of music and creative dramatics in aural rehabilitation." State Conference on Innovative Practices in Special Education, Cedar Rapids.
- FOLKINS, J. W.** (March 1988). "Attracting the most promising students to biomedical research: With special reference to communication disorders." The National Institutes of Health, Meeting of the Advisory Committee to the Director of NIH, "Health of Biomedical Research Institutions," Evanston, Illinois.
- HALL, P. and JORDAN, L. S.** (March 1988). "Developmental verbal apraxia: Remediation." Clinical Speech and Language Services, Area Education Agency 9, Bettendorf.
- KAHN, G.** (March 1988). "Early identification—commitment or lip service?" Seminar, Quad Cities Speech-Language-Hearing Association, Bettendorf.
- Fryauf-Bertchy, H.; KALLAUS-GAY, A.; NIEBUHR, D.; and TYLER, R.** (March 1988). "The future is now: New options for Iowa's deaf children." Workshop, Department of Public Instruction/Iowa Special Education Spring Conference, Cedar Rapids.
- MOON, J.; Stemple, J.; and Maniglia, A.** (March 1988). "Assessment and management of voice disorders: Clinical advances." Workshop, Cleveland Hearing and Speech Center, Cleveland, Ohio.
- SCHUM, R. L.** (March 1988). "Delivering sensitive information." Parent-Educator Connection Conference, Iowa Department of Education, Des Moines.
- SCHUM, R. L.** (March 1988). "Counseling the communication-disordered and their families." Workshop, Chapter of National Student Speech-Language-Hearing Association, University of Nebraska, Lincoln, Nebraska.
- SCHUM, R. L.** (March 1988). "Self-esteem and the deaf child." Iowa Department of Education, Amana.
- SCHUM, R. L.** (March 1988). "Communication and social growth: A developmental model of deaf social behavior." Council for Exceptional Children, Washington, D.C.
- SMALL, A. M.** (March 1988). "A temporal analog of the critical band." Lecture, University of Illinois, Champaign-Urbana, Illinois.
- ANDERSON, C. V.** (April 1988). "The impact of hearing loss upon life style." Lecture, Iowa State University Handicap Awareness Days, Ames.
- ANDERSON, C. V.** (April 1988). "Facing up to hearing loss." Workshop for the public, Iowa City/Johnson County Senior Citizens Center, Iowa City.
- MOON, J.** (April 1988). "An inexpensive mask for the detection of nasal airflow." American Cleft Palate Association, Williamsburg, Virginia.
- TYLER, R. S.; Iler-Kirk, K.; and Tye-Murray, N.** (April 1988). "Simultaneous and forward masking patterns of a formant transition." Eighth International Symposium on Hearing, Paterswolde, The Netherlands.

VAN DEMARK, D. R.; Hotz, M.; Perko, M.; and Nussbaumer, H. (April 1988). "Long-term speech results of the Zurich two-stage palate repair." American Cleft Palate Association, Williamsburg, Virginia.

BENTLER, R. A. (May 1988). "Clinical application of probe tube technology." Workshop, New Jersey Speech-Language-Hearing Association, Cherry Hill, New Jersey.

HALL, P. K. and JORDAN, L. S. (May 1988). "Developmental apraxia of speech: New ways of thinking about this clinical dilemma." Workshop, Clinical Speech and Language Services, Area Education Agency 9, Bettendorf.

HARDY, J. C. (May 1988). "Management of dysarthria." Workshop for speech-language clinicians, Mountainbrook Research and Education, Inc., Gatlinburg, Tennessee.

Nerad, J. A.; HURTIG, R. R.; Stamler, J. F.; and Bulgarelli, D. (May 1988). "Parameters of ocular motility with ocular prostheses." Association for Research in Vision and Ophthalmology, Sarasota, Florida.

ROBIN, D. A. (May 1988). "Disorders of speech production and prosody in children with neurofibromatosis." National Neurofibromatosis Society, New York, New York.

VAN DEMARK, D. R.; Hardin, M.; and MORRIS, H. L. (May 1988). "Assessment of velopharyngeal competency: A long-term process." Second International Symposium on Feeding and Dento-facial Development, Chicago, Illinois.

BENTLER, R. A. and PAVLOVIC, C. V. (June 1988). "Comparison of discomfort levels obtained with puretones and multitone complexes." Nineteenth International Congress of Audiology, Jerusalem, Israel.

ANDERSON, C. V.; BENTLER, R. A.; and ELFENBEIN, J. L. (June 1988). "Issues related to hearing disorders." Workshop, Iowa Division of Vocational Rehabilitation, Iowa City.

LUSCHEI, E. S. (June 1988). "A search for the role of jaw muscle spindles in the production and control of voluntary jaw movements." Seventeenth Annual Symposium: Care of the Professional Voice, sponsored by the Voice Foundation, New York, New York.

PAVLOVIC, C. W. (June 1988). "Clinical assessment of hearing aid benefit to speech intelligibility." Nineteenth International Congress of Audiology, Jerusalem, Israel.

ROBIN, D. A.; Rizzo, M.; and BROBECK, T. C. (June 1988). "The effect of focal cerebral lesions on intramodal and crossmodal orienting of attention." Clinical Aphasiology Conference, Harwich Port, Massachusetts.

Rizzo, M. and ROBIN, D. A. (June 1988). "Evidence for a cerebral attention network from automated probes of human lesions." European Neurologic Society, France.

TITZE, I. R. (June 1988). "The science of voice production." Three-day course, Westminster College, Princeton, New Jersey.

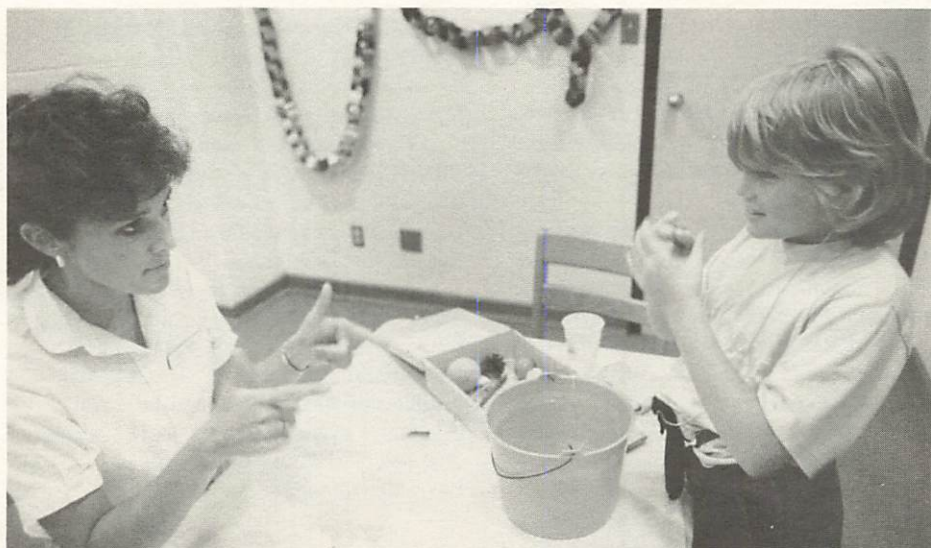
TYLER, R. S. (June 1988). "Speech perception with cochlear implant." Nineteenth International Congress of Audiology, Jerusalem, Israel.

TYLER, R. S.; Tye-Murray, N.; and Lansing, C. (June 1988). "Training the ear to listen: Comparison of a reduced feature, amplified feature, and natural speech approach." Summer Institute, Academy of Rehabilitative Audiology, Winter Park, Colorado.

Summer Residential Program *continued from page 1*

SRP continues to be a major component of practicum training for the graduate students in speech-language pathology and audiology. In addition, a number of faculty and graduate students have used SRP children and activities as a base for clinical research projects. Because of the unique nature of the program and the children, SRP has been a rich source of ideas and opportunities for clinical research.

Tuition for SRP is \$885 for each child. Because there are always some children whose families need assistance to send their children to SRP, donations for SRP scholarships are welcome. We would like to thank those of you who have contributed to scholarships in the past.



GRANT SUPPORT

Paul J. Abbas and Richard S. Tyler: National Institute of Neurological and Communicative Disorders and Stroke (Program Project administered through Department of Otolaryngology—Head and Neck Surgery; B. Gantz, Principal Investigator), “Iowa Cochlear Implant Project.”

Jill L. Elfenbein: Junior Faculty Seed Grant, “Developmental Patterns of Duration Discrimination.”

John W. Folkins: U.S. Department of Education, “Doctoral Training in the Management of Hearing Impaired and Language Disordered Children.”

John W. Folkins and Charles V.

Anderson: U.S. Department of Education, “Training of Professional Personnel in Speech-Language Pathology and Audiology.”

John W. Folkins, Robert L. Schum, and Charles V. Anderson: U.S. Department of Education, “Training of Professional Personnel for Counseling with Communication-Impaired Children and Their Families.”

John W. Folkins, Gerald N.

Zimmermann, Carolyn J. Brown, and Jerald B. Moon: National Institute of Neurological and Communicative Disorders and Stroke, “Studies of Speech Articulation.”

James C. Hardy and Herman A. Hein (Pediatrics), Codirectors; also includes **J. Bruce Tomblin:** Robert Wood Johnson Foundation (administered through University Hospital School), “Identification of and Services for Communication Disorders in Infancy.”

Richard R. Hurtig, Donald A. Robin, and Linda Jordan: National Institute of Neurological and Communicative Disorders and Stroke (administered through Department of Neurology; A. Damasio, Principal Investigator), “Anatomical Substrates of Complex Behavior.”

Richard R. Hurtig: University of Sertoma, “Development of a Spectral Compression Circuit for Vibrotactile Aids.”

Erich S. Luschei: National Institute of Dental Research, “Central Projection of MES V Afferents.”

Hughlett L. Morris, Principal Investigator; also includes **Duane R. Van Demark, John W. Folkins, and David L. Jones:** National Institute of Dental Research (Program Project administered through Department of Otolaryngology—Head and Neck Surgery), “Growth, Surgical, and Speech Aspects of Cleft Palate.”

Ingo R. Titze and Fariborz Alipour-Haghighi: National Institute of Neurological and Communication Disorders and Stroke, “Noninvasive Techniques to Evaluate Phonatory Function.”

Richard S. Tyler: Collaborative Research Grants Programme, NATO, “International Test Battery for Cochlear Implant Patients.”

Richard S. Tyler (with Nancy-Tye Murray and Charissa Lansing): Deafness Research Foundation, “Development of Computer-Based Auditory Training Materials.”

1987 GRADUATES

B.A./B.S.

Hertha S. Arends (Manchester)
Christine A. Balla (St. Charles, Illinois)
Carol L. Block (Morton Grove, Illinois)
Shelli R. Bryant (Columbia, Maryland)
Jodi L. Burrell (Van Horne)
Susan R. Callaway (Iowa City)
Deanne M. Distelhorst (Burlington)
Karalee K. Emrich (Tipton)
Jennifer W. Erickson (Fairbank)
Julie Y. Flack (North Liberty)
Craig M. Foote (Cedar Rapids)
Julia A. Frederick (Freeport, Illinois)
Lora L. Fudge (Newton)
Lona J. Gustafson (Des Moines)
Melissa J. Hanken (Ossian)
Mary K. Herder (Monroe)
Jenny M. Jepson (Coralville)
Sherrie L. Kopecky (Cedar Rapids)
Jane M. LaLonde (Vinton)
Jamie A. Lawler (Flossmoor, Illinois)
Marcia C. McNamara (Iowa City)
Kerrin G. A. McPeck (Batavia, Illinois)
Laura A. Mims (Neenah, Wisconsin)
Mia R. Mueller (Pocahontas)
Marcia L. Oldenburg (Coralville)
Mary A. Osing (Cedar Rapids)
Maria A. Polich (Norwalk)
Amy E. Powell (Wheaton, Illinois)
Brenda J. Rees (Columbus Junction)
Brian K. Rice (Sioux City)
Deanne L. Riess (Blacksburg, Virginia)
Rita K. Schultz (Clutier)
Theresa K. Schwarz (Keokuk)
Lynn R. Siepker (Albert City)
Anju Singh (India)
Felicia A. Sommer (Wilmette, Illinois)
Cynthia K. Swanson (Washington, Illinois)
Jolie M. Youel (Houston, Texas)

Richard S. Tyler (with Nancy-Tye Murray): Easter Seal Foundation, “Development of Laser-Video Audiovisual Training Materials.”

Richard S. Tyler: American Tinnitus Association, “Binaural Phase Effects for the Masking of Tinnitus.”

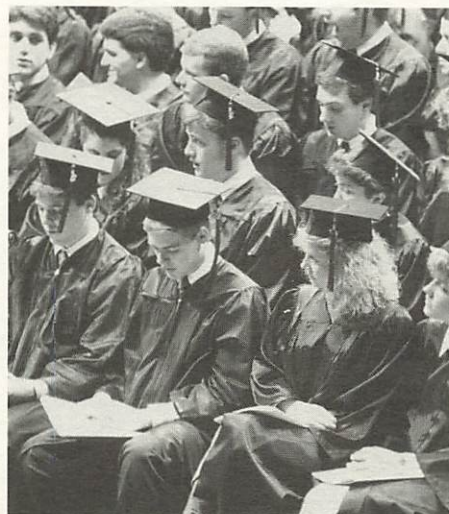
Amy L. Weiss: Iowa Department of Public Instruction/Grant Wood Area Education Agency, “Preschool Language-Impaired Intervention.”

M.A.

Margaret W. Chin (Hong Kong)
Hannah L. Clarke (Dunlap, Illinois)
Lori M. Donovan (Peoria, Illinois)
Julie K. Duisterhof (Kalamazoo, Michigan)
Anne L. Goudreau (Wheaton, Maryland)
Linda S. Hand (New Zealand)
Mary C. Jewell (Dodgeville, Wisconsin)
Alicia M. Killeen (Clinton)
Jane N. Mozena (Vinton)
Kelli S. Murdock (Peoria, Illinois)
Jennifer A. Oeth (Dubuque)
Mary Q. Roane (Moline, Illinois)
Danielle M. Rubino (Mount Prospect, Illinois)
Mary B. Smith (Des Plaines, Illinois)
Danette K. Sokoloski (Minneapolis, Minnesota)
Patricia A. Tillman (Waterloo)
Paula R. Webber (Fort Collins, Colorado)

Ph.D.

Ruth A. S. Bentler (West Point)
Ken M. Bleile (Eugene, Oregon)
David L. Jones (Washington, Pennsylvania)



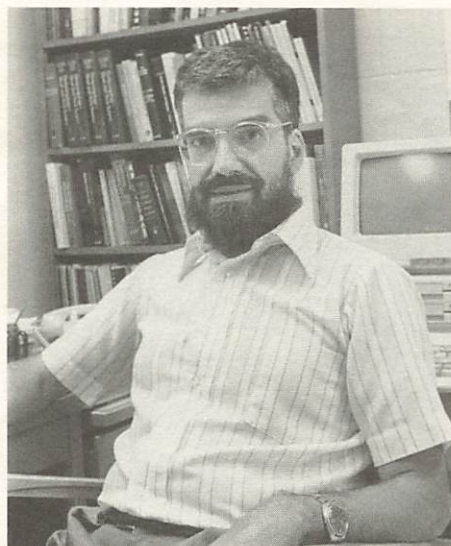
Paul Abbas

Professor Paul Abbas received a B.S. in electrical engineering from MIT in 1969 and a Ph.D. in biomedical engineering from Johns Hopkins University in 1974. He came to The University of Iowa as an assistant professor in 1974.

Professor Abbas has taught courses in instrumentation, anatomy, auditory physiology, introduction to communication processes and disorders, and signal and system theory, as well as giving many lectures in other classes and leading doctoral seminars. In 1986 he received the University's M. L. Huit Award for outstanding teaching and is especially popular with doctoral students. Thirteen dissertations have been completed under his direction, and he is presently directing the dissertations of Carolyn J. Brown, Kathleen C. Campbell, Abdel A. Elshintinawy, Beth Prieve, and Gail A. Takahashi.

Professor Abbas's research is primarily related to physiological response properties of normal and hearing-impaired auditory systems. His studies have included work with single-nerve fiber responses, whole-nerve action potentials, auditory brainstem responses, and cochlear emissions.

His second area of research is electrical stimulation of the auditory system, in particular, the study of cochlear implants. He serves as the director for the section on electrophysiology of The University of Iowa Cochlear Implant Program Project, funded by the National Institutes of Health. In this project, he is studying the electrically evoked auditory brainstem response in cochlear implant patients.



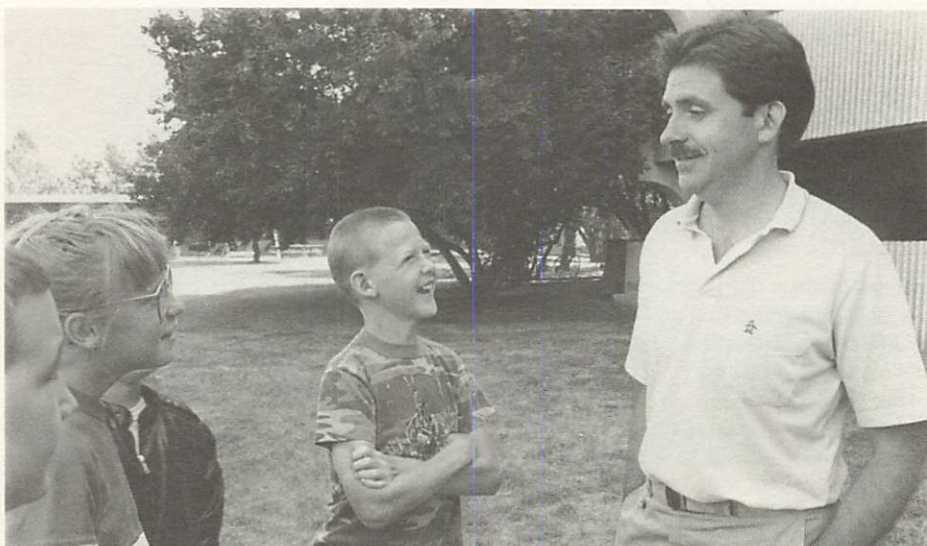
Paul Abbas

Bob Schum

Bob Schum joined the department as a clinical psychologist in August 1977. He has a B.S. with honors in psychology earned at The University of Iowa in 1972. He also was a distance runner for The University of Iowa track team. He received the M.A. in clinical psychology in 1974 and the Ph.D. in clinical psychology in 1983, both from the University of Denver.

Professor Schum became assistant director of the Wendell Johnson Speech and Hearing Clinic in 1979 and director of the Summer Residential Program in 1985. He also holds an appointment in the department as adjunct associate professor. Last spring, while Charlie Anderson was on developmental assignment, he served as acting director of the Wendell Johnson Speech and Hearing Clinic and as a member of the departmental Admissions/Appointments Committee. He also serves on the departmental Awards and Lectureships and Undergraduate Concerns committees and chairs the departmental Human Subjects Review Committee.

Professor Schum teaches a course for both undergraduate and graduate students on counseling and psychological theories as they relate to adjustment and management of communication disorders. He is a coinstructor for diagnostic practicums. He recently published the monograph *Counseling in Speech and Hearing Practice* Clinical Series No. 9, National Student Speech Language Hearing Association (1986), and he played a major role in writing a training grant based on counseling for communication impairment recently funded by the U.S. Department of Education.



Bob Schum and children from the 1988 Summer Residential Program

Professor Schum has a variety of research interests, including psychological development of hearing-impaired children, counseling of parents of communication-impaired children, and psychological assessment of children with communication impairments. Two to four students register for independent research with him each semester. Professor Schum is also a popular speaker and often gives presentations and workshops for local, state, and national groups.

Steve Austin

Steve Austin is a Ph.D. student specializing in voice science and voice disorders. He has a Bachelor of Music degree from Howard Payne University in Brownwood, Texas, with a major in vocal performance. He received a Master of Music degree in vocal performance from North Texas State University in Denton, Texas. He also did graduate work in speech pathology at North Texas before coming to The University of Iowa in 1985.

Steve has taught private voice for many years and has also taught in the Dallas County Junior College System. He has performed leading roles in Broadway musicals, theater, and opera as an amateur, but he also has several professional credits with opera companies through the Southwest. Steve also has performed as a professional chorus member with the Dallas Opera and the Fort Worth Opera and with the Meistersingers of Fort Worth, a professional madrigal group. Steve has toured internationally with various choral groups.

Steve is interested in combining his interest in professional vocal performance and vocal pedagogy with training in voice disorders. Since joining our program, he has taken course work in basic science areas, speech science, computer applications, voice disorders, and a variety of seminars and research registrations. He has served as a teaching assistant for both Fundamentals of Speech Science and Anatomy of Speech and Hearing Mechanisms and has served as research assistant for Paul Abbas and Ingo Titze.

Steve's research interests include the investigation of vocal registers and the acoustics of the vocal tract, as well as the development of efficient training techniques for students of singing. After finishing his degree, Steve plans to combine the teaching of singing and related areas with voice research in an academic environment.

Karalee K. Emrich

Karalee Emrich is an M.A. student in speech-language pathology. She is a native of Tipton and received her bachelor's degree with honors in speech and hearing science from The University of Iowa. While an undergraduate, Karalee studied on a University of Iowa Dean's Scholarship and a UI Scholarship. She was on The University of Iowa President's List three times, The University of Iowa Dean's List six times, the National Dean's List, Phi Eta Sigma, Mortar Board, and the Order of Omega. Karalee was a member of Alpha Chi Omega sorority, and she did volunteer work at The University of Iowa Hospital School and the Johnson

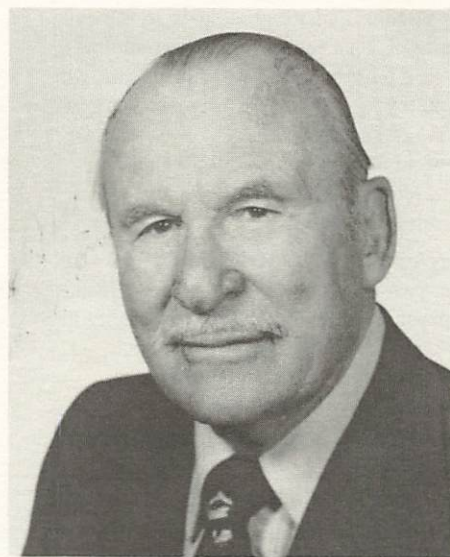
County Care Facility. During the three years that Karalee served as a UI Scholar, she was assigned to work with Professor Richard Hurtig, helping with research related to eye movements and visual recognition in normal and aphasic subjects. Karalee's honors thesis was titled "Eye Movements in Association with Facial Recognition."

As a master's student, Karalee is the president of our NSSLHA chapter for her second straight year. She has been active in planning activities for students and faculty, including the annual Christmas party and fund-raisers. Karalee is planning a master's thesis on attentional deficits in patients with Alzheimer's disease. It is her hope that the study will provide information about early diagnosis as well as aid in understanding neural mechanisms underlying human attention. As part of this study, Karalee will examine differences in attentional abilities between normal young and elderly individuals.

Karalee also has been active in the clinic during her first year as a graduate student. She has developed a rehabilitation program for patients with closed head injury that focuses on pragmatic skills and interpersonal interactions. She also has been involved in the diagnosis of speech and language problems in children with neurofibromatosis.

Eventually Karalee hopes to pursue doctoral studies. She would like to conduct clinical research that focuses on questions about diagnosis and treatment of patients with brain injury.

IN MEMORIAM— LEE EDWARD TRAVIS

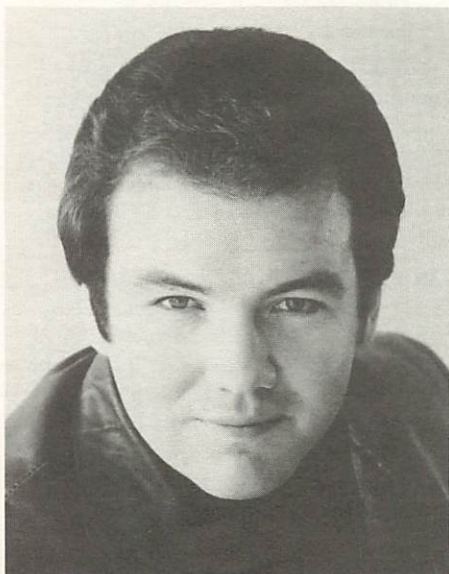


Lee Edward Travis died at his home in California on October 10, 1987. He was 92 years old. Professor Travis earned his B.A. in 1922, M.A. in 1923, and Ph.D. in 1924, all from The University of Iowa. From 1924 to 1927, he held a National Research Council fellowship, for which he was selected to prepare and develop a program of research in the causes and treatment of speech and reading disorders. In 1927 he was appointed associate professor, becoming a full professor in 1928. In 1937 he succeeded Carl E. Seashore as head of the Department of Psychology. In 1938 he left Iowa to assume a professorship at the University of Southern California.

Travis initiated a variety of innovative programs at The University of Iowa, including the program that would later become the Department of Speech Pathology and Audiology. He did pioneering work in speech research, publishing more than 100 articles, and he wrote *Speech Pathology*, the first book of its kind.

In 1925, a small group of scientists met in the living room of his home on Summit Street and decided to form a scientific association. That association is now the American Speech-Language-Hearing Association. Perhaps, however, his greatest legacy is in the students he trained. He directed 46 dissertations, and the list of his doctoral students contains the names of many of the pioneers of speech pathology and audiology.

We thank Professor Emeritus John Knott for providing much of the information contained in this memoriam.



Steve Austin



Karalee K. Emrich

We were delighted that so many graduates responded to the 1987 issue of the newsletter, and we are hoping to see even more of your names in the next edition. Please let us, as well as other alumni with whom you may not be in touch, know where you are and what you're doing. Just take a few minutes to complete the alumni form and return it to us. We really would enjoy hearing from you.

ANA JAVIER TARUC (M.A. '79)—Working part time for the Jackson, Michigan, Speech and Hearing Clinic and county health department, mainly with stroke and laryngectomy patients. One daughter, Celeste, born January 1986.

MARIBETH VOGEL ECKENRODE (B.A. '77, M.A. '79)—Clinical audiologist at V.A. Medical Center in Fort Howard, Maryland, providing full range of audiologic, diagnostic, and rehabilitative services to veterans in Baltimore area. Actively involved in community theater in Baltimore area.

HEATHER HOGUE ORDONA (M.A. '81)—Speech-language pathologist with Mississippi Bend Area Education Agency, working in the Davenport school system. Married in 1986 to Truce Ordon, a child and adult psychiatrist in Davenport.

EINER BOBERG (B.A. '62, M.A. '63; Ph.D., Minnesota, '68)—Professor, University of Alberta, Canada, doing research, teaching, and clinical work in the area of stuttering. Recently established the Institute for Stuttering Treatment and Research; received honors from the Canadian Speech, Language, Hearing Association in 1983.

GEORGIA ROMBAKIS CRAWFORD (B.S. '79; M.Ed., Southwest Texas State, '81)—Assistant director of speech-language pathology at Houston, Texas, Ear Research Foundation; member of a leading cochlear implant team of investigators that conducts workup and follow-up evaluations, research, and rehabilitative services to hearing impaired, as well as normal hearing populations.

MARY JO CREW KLEINSCHMIDT (B.A. '54; M.S., Utah)—Handicap services coordinator and speech-language pathologist for two Salt Lake City, Utah, Head Start programs; auxiliary faculty member, University of Utah.

ELIZABETH WEST DEVITT (B.S. '84, M.A. '86)—Living in West Covina, California. Staff speech-language pathologist, V.A. Outpatient Clinic, Los Angeles.

ELLEN DUSTMAN (B.A. '69, M.A. '70)—Worked 12 years as speech-language pathologist in Boulder, Colorado, schools; now video production manager, in partnership with husband, producing documentary and educational video programs.

ANN MERKEL BARKER (B.A. '68, M.A. '70)—Living in Princeton, Iowa. Staff audiologist with Audiology Consultants, Inc., in Davenport; private practice, including hearing aid dispensing, ENG, and auditory evoked response; serving as secretary of Quad Cities Speech and Hearing Association.

CAROL C. BELLAIRS (M.A. '83)—Formerly speech-language clinician for Area Education Agency 7, Cedar Falls; now children's librarian, Hudson Public Library. One daughter, Rachel Elizabeth, born January 1986.

PAULA CHAMBERS KATHREIN (M.A. '79)—Doctoral student in speech-language pathology at Northwestern University. Married with two children (Jane, 2½ years, and Joseph, 6 months).

ROSINE SALAZER (B.S. '74; M.A., Florida)—Coordinator, Speech and Language Services, London Board of Education, London, Ontario. Member of ASHA Mental Retardation/Developmental Disabilities Committee.

RUTH BORCHARDT STOECKEL (B.S. '77; M.A., Minnesota, '80)—Currently working half-time as speech-language pathologist in Rochester, Minnesota, Public Schools; spending time at home with two daughters.

DALE BINGHAM (B.A. '51, M.A. '52)—Retired from Division of Developmental Disabilities (Hospital School Child Development Clinic), The University of Iowa, in January 1987. Having more time for family activities, but busier than ever. Continuing to be very active as education officer in the Cedar Rapids Power Squadron—a boating organization.

BETTY STIEFEL (B.S.N. '80, M.A. '85)—Living in Victor. Speech-language pathologist in Grant Wood Area Education Agency. Published "On My Own with Language," *LinguSystems* 1987. One son, Thomas Ethan, born October 1986.

RITA SOCOLOFSKY PRAY (M.A. '83)—Private practice in speech pathology in Des Moines. One son, Michael William, born July 1986.

EUNICE ACHENBACH EIDE (B.A. '54; M.A., University of Wisconsin-Madison, '77)—Speech-language clinician, Madison, Wisconsin, Public Schools.

MOLLY SHANNON THOMPSON (B.S. '83; M.A., Minot State, '85)—Speech-language pathologist with preschool handicapped and adolescents in Minot, North Dakota. Has two cats; expecting first child in January.

AMY BRINER RICHARDS (B.S. '83; M.A., Houston, '86)—Speech-language pathologist at the Briarwood School, Houston, Texas. Has one son, Neal, born June 1985; another child expected May 1988.

SHIRLEY BARKER NASH (B.S. '58; M.S., San Francisco State, '81)—Living in Moraga, California. Speech-language pathologist in the San Lorenzo, California, Unified School District servicing 3 to 12 year olds in one elementary school.

LESLIE HANAU DUBLINSKE (B.S. '69, M.A. '70)—Speech-language pathologist in Montgomery County, Maryland, Public Schools serving preschool handicapped program and one elementary school.

JEANNE KRAMME FOUKE (B.A. '62; M.A., Azusa Pacific, '81)—ABI specialist, High Tech Center, Ventura Community College, Ventura, California.

DANIEL M. LARMORE (B.S. '73; M.S., Central Missouri State, '74)—Administrator, Harmony House Health Care Center, Waterloo; president-elect of Iowa chapter of American Association on Mental Deficiency and president-elect of Region VIII AAMD.

SHIRLEY HETTRICH KLUPCHAK (B.S. '78)—Living in Wheaton, Illinois. Self-employed CPA. Has two sons, ages 4 months and 2 years.

LOUISE KENT-UDOLF (Ph.D. '66)—Coordinator, special education, Region 2 Education Service Center, and adjunct professor, special education, Corpus Christi State. President of the Communication Division of American Association on Mental Retardation.

LINDA STOCK MATTER (B.A. '65, M.A. '66, Ph.D. '80)—Speech-language coordinator, Fergus Falls, Minnesota, Area Special Education Cooperative (9 school districts); has received four research grants from Minnesota Department of Education since 1984; does free-lance work for Minnesota Department of Education. Married, 3 children (Brock, 16; Mindy, 13; Reed, 5).

NORMAN E. BISSELL (M.A. '59)—Associate professor of special education and director of Center for Parent-Professional Teamwork at University of Cincinnati.

JILL GLASS BROUGHTON (M.A. '86)—Speech-language pathologist for communication disorders classroom in Mount Carmel, Illinois.

E. SUZANNE ROACH-PROTHEROE (B.S. '81)—Living in Houston, Texas, teaching seventh-grade English. Two daughters, one born in 1985, one in 1987.

JEANNE CANTY DEVINE (B.S. '82; M.A., Northwestern, '84)—Audiologist at the Christ Hospital in Cincinnati, Ohio.

MARILYN HOUSER EARLEY (B.S. '68, M.A. '70)—Speech pathologist, St. David's Hospital Rehabilitation Center, Columbia, Missouri.

BARBARA HEADY-ERICKSON (M.A. '73)—Living in Ames. Speech-language clinician, Area Education Agency. Has two children, Jennifer and Jon.

RITA DUSHMAN RICH (M.A. '73)—Living in Huber Heights, Ohio. Speech-language pathologist, private practice, working primarily with preschoolers and multiply handicapped children. Married, 3 children. Very much an activist for children's issues, especially special-needs adoption and special education.

KELLY FONING BONDESSON (B.S. '83)—Living in San Diego, California. Speech-language pathologist with InSpeech, Inc.

COLLEEN WILCOX (B.S. '71; M.S., University of Arizona, '74; Ph.D., University of South California, '86)—Director of Special Education and Pupil Services, Tucson, Arizona, Unified Schools. Legislative councillor, ASHA, for Arizona.

JENNIFER HAMBORG YANDA (B.A. '81, M.A. '84)—Audiologist, Cochlear Implant Project, University of California, San Francisco. One daughter, Elizabeth, born October 1986.

KATHRYN A. MOON (B.S. '63; M.A., University of Wisconsin-Madison, '76)—Speech-language therapist, high school level, Madison Public Schools.

Department of Speech Pathology and Audiology The University of Iowa Iowa City, Iowa 52242		
LAST NAME	FIRST NAME	MAIDEN NAME (if applicable)
ADDRESS		
CITY, STATE, ZIP		
UI DEGREE(s) AND YEAR(s)		
CURRENT POSITION		
PROFESSIONAL ACTIVITIES, PERSONAL NEWS, ETC.		

**The University of Iowa
Department of Speech
Pathology and Audiology
Iowa City, Iowa 52242**

**Nonprofit Organization
U.S. Postage
PAID
Permit Number 45
Iowa City, Iowa**